



SeaGIS 2.0 – From theory to practice

Sustainable development of the marine environment



Johnny Berglund, Project manager, County Administrative Board of Västerbotten
Smart Sea Seminar 18.09.18, Future of the Gulf of Bothnia



SeaGIS 2.0 - Support for ecosystem based planning of the marine environment using GIS

Cooperation between Swedish and Finnish
authorities in the Northern Quark area

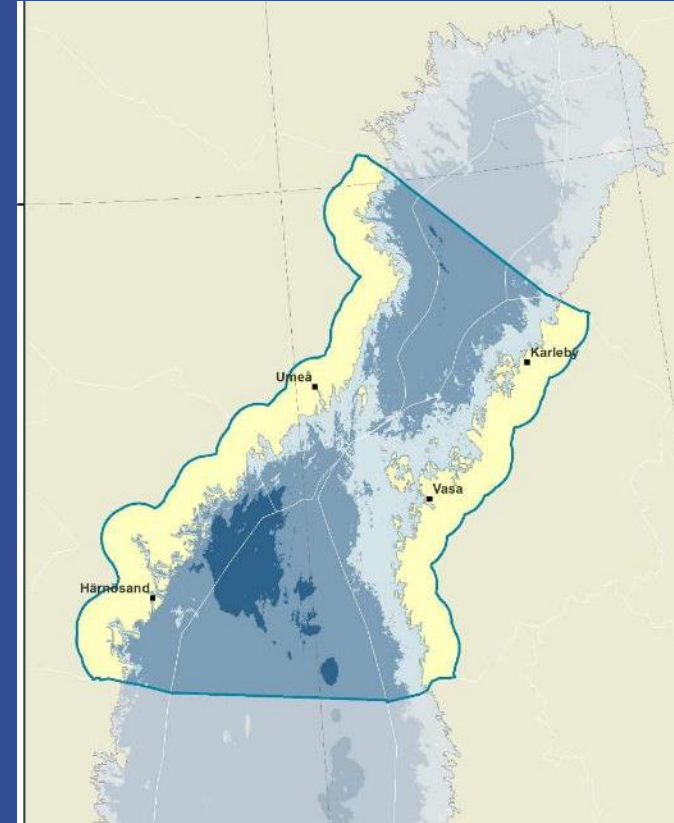
2015-2018



Cross-border solutions for integrated maritime governance

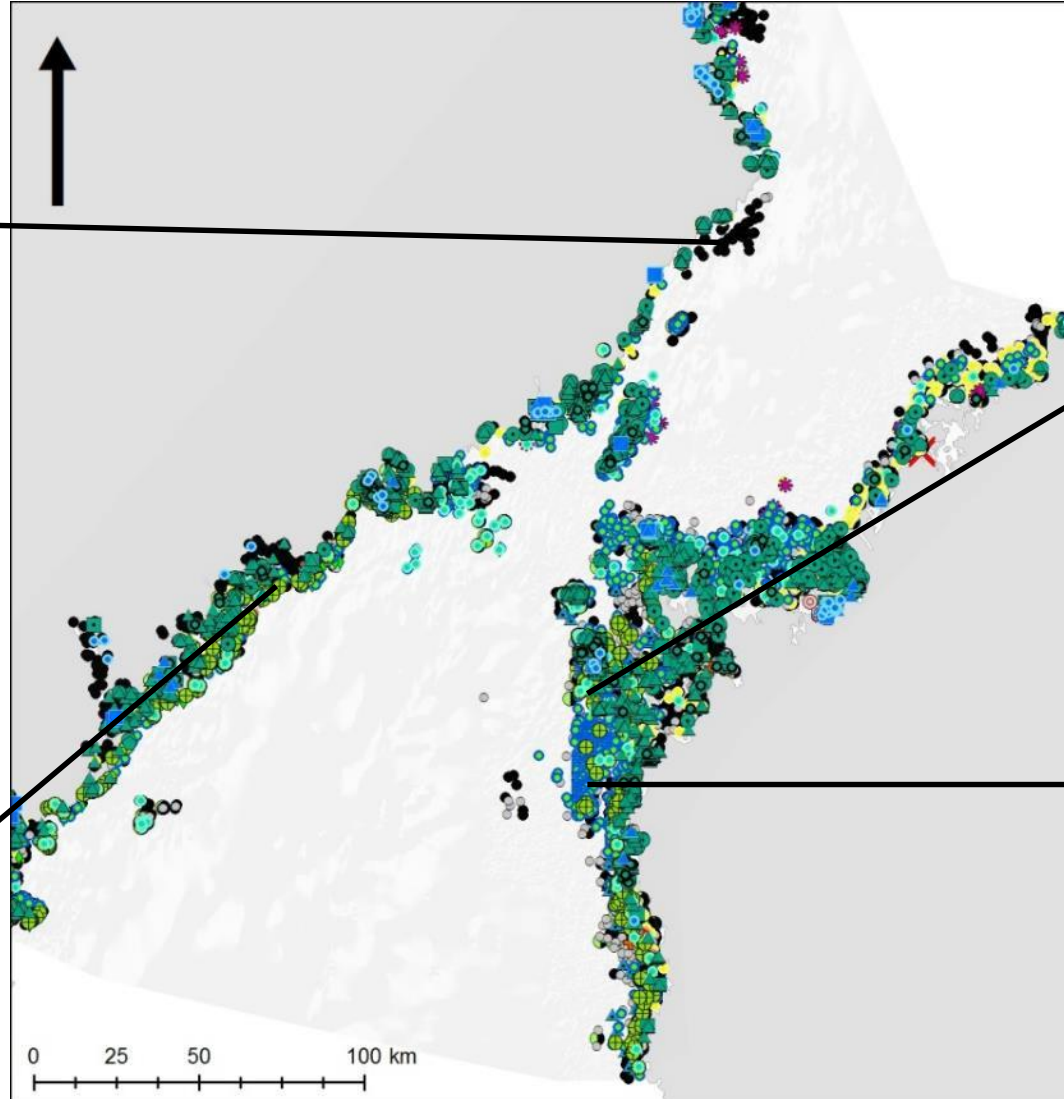
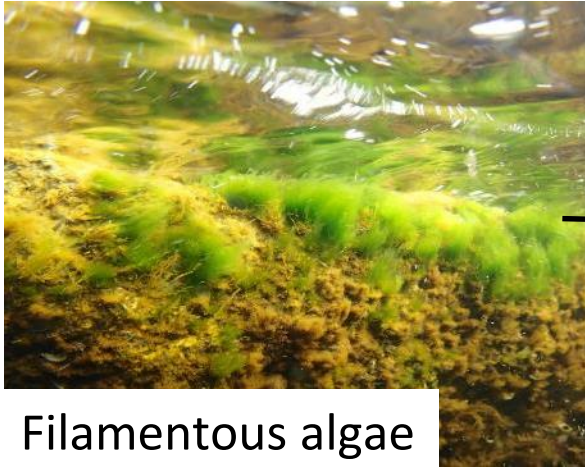
Activities

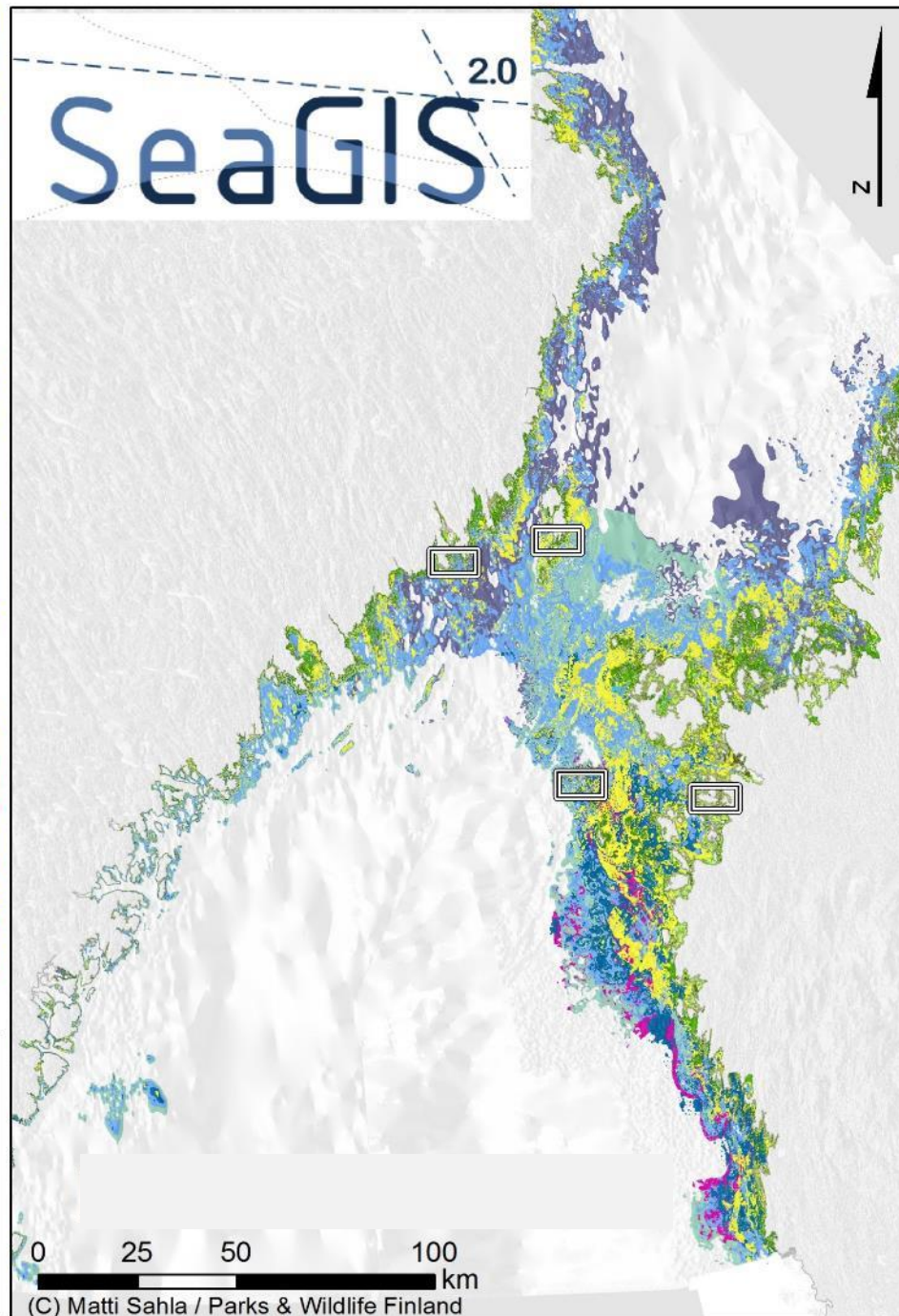
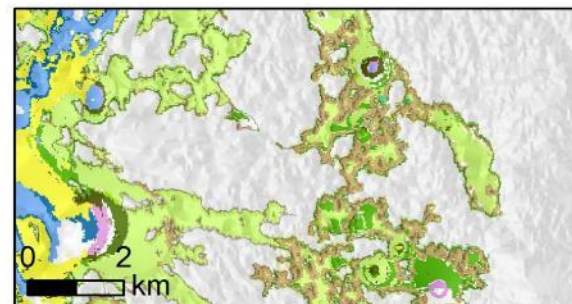
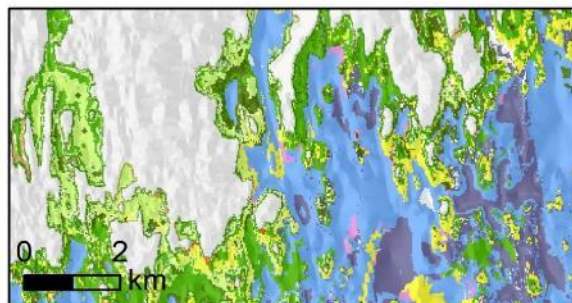
1. MSP data and participation
2. Regional goals for Blue Growth
3. State of the environment – Nature conservation
4. Ecosystem services
5. Cooperation - Oil spill protection
6. Establishment of the map service



HELCOM Underwater Biotope modelling

30 000 observations classified into HUB





HUB Biotopes

- A1 *Phragmites australis*
- A2 *Cyperaceae*
- B1 *Potamogeton* perf etc
- B2 *Zannichelia* etc
- B3 *Myriophyllum*
- B4 *Charales*
- B5 *Najas marina*
- B6 *Ranunculus*
- C1 *Fucus*
- C2 Non-fil cort red algae
- C3 Foliose red algae
- C5 Filamentous algae
- D Water Moss
- E1 *Mytilidae*
- G1 *Hydrozoa*
- H Epibenthic moss animals
- I1 *Balanidae*
- J Epibenthic sponges
- L6 *Unionidae*
- R Soft crustose algae
- S1 Filamentous annual algae
- S2 *Chorda filum* etc
- S3 *Vaucheria*

SWAMs Draft of MSP

Havsplanegräns



Områdesbeskrivningar
(1:3863148 - 32395206)

(- 3880147)

Områdesavgränsningar



Sandutvinning



Yrkesfiske



Attraktiva livsmiljöer



Sjöfart



Sjöfart under utredning



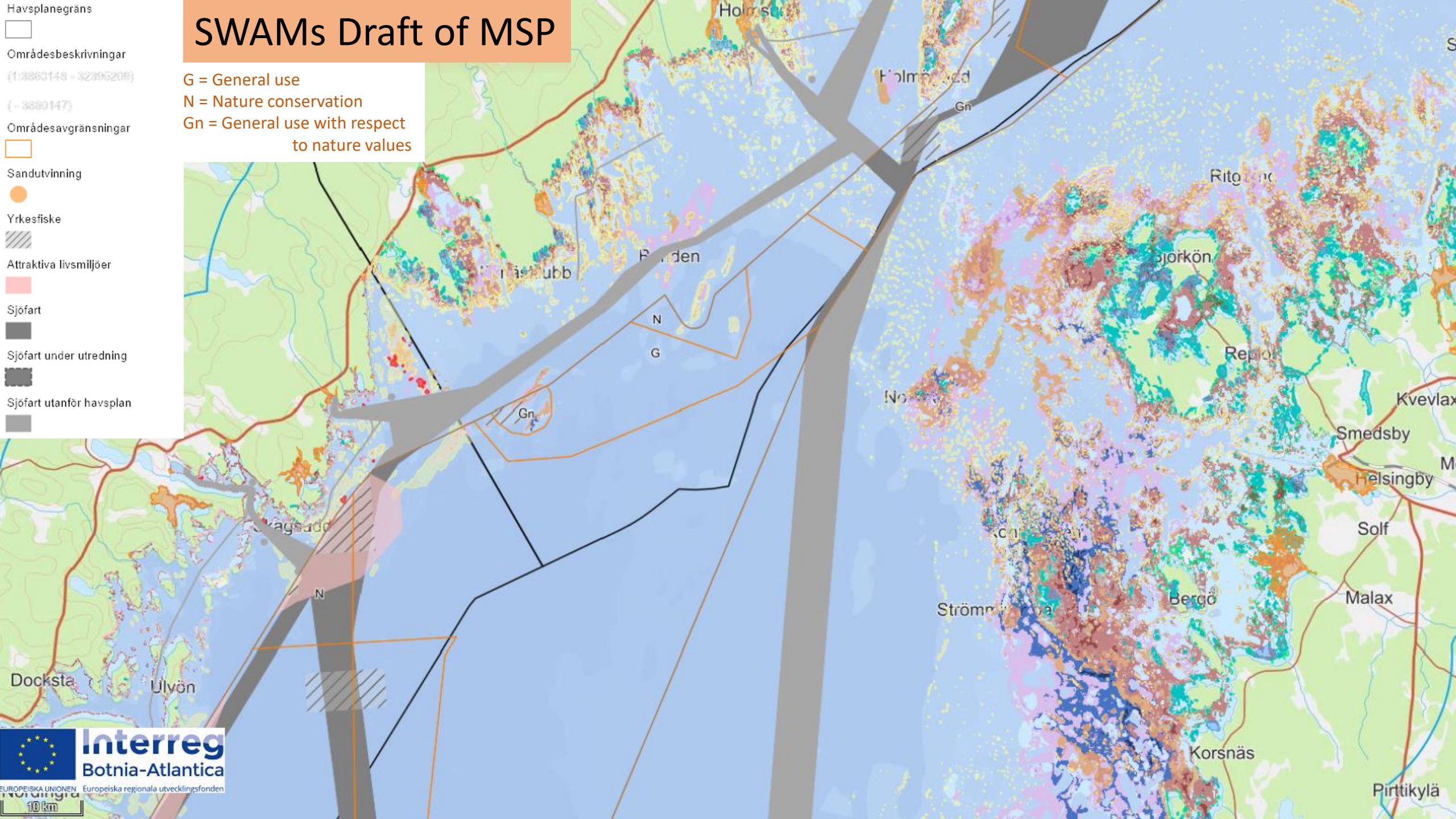
Sjöfart utanför havsplan



G = General use

N = Nature conservation

Gn = General use with respect
to nature values



SWAMs Draft of MSP

Havsplanegräns
(1:3863148 - 32395206)

Områdesbeskrivningar
(- 3880147)

Områdesavgränsningar

Sandutvinning

Yrkesfiske

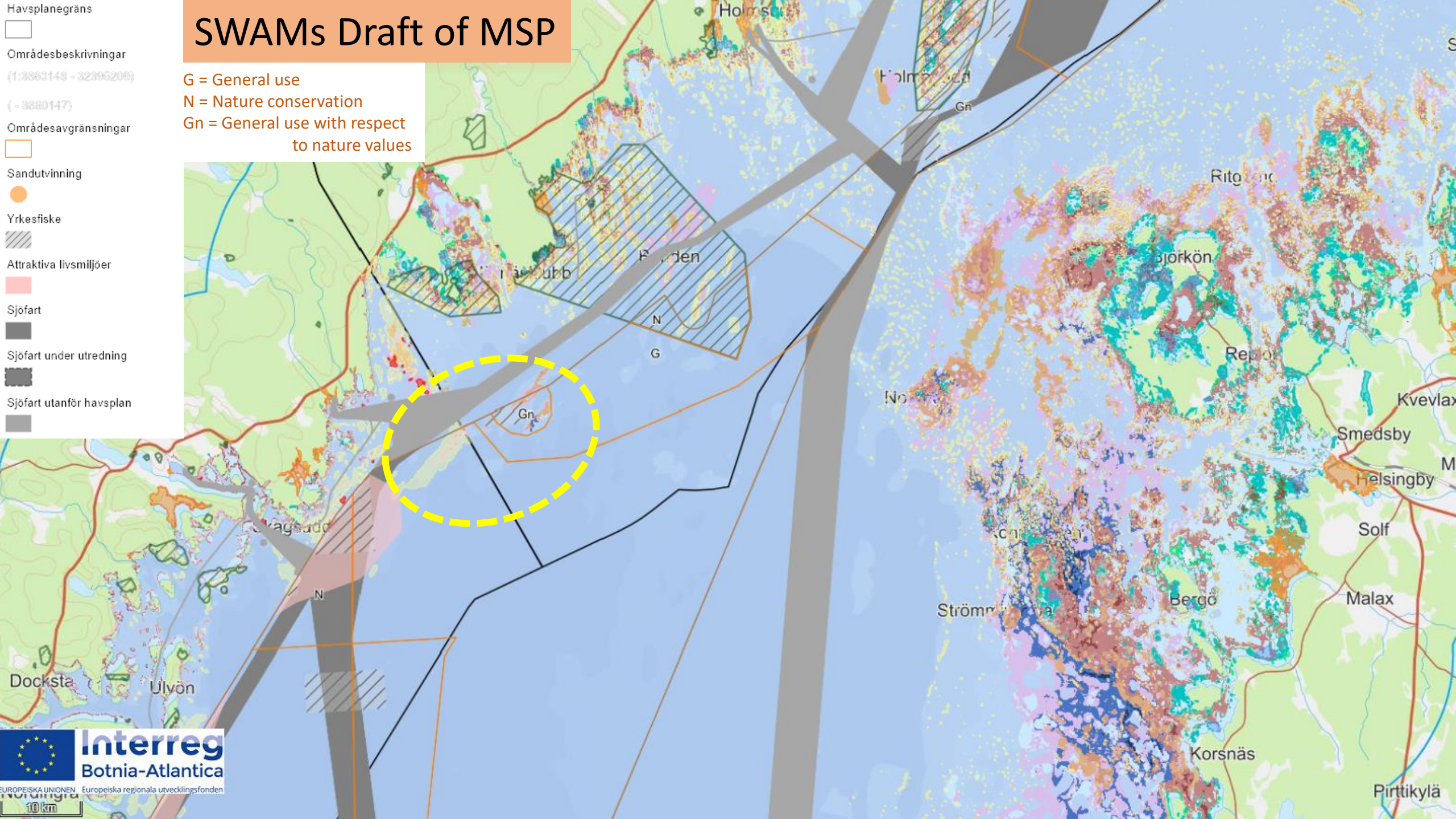
Attraktiva livsmiljöer

Sjöfart

Sjöfart under utredning

Sjöfart utanför havsplan

G = General use
N = Nature conservation
Gn = General use with respect
to nature values



SWAMs Draft of MSP

G = General use
 N = Nature conservation
 Gn = General use with respect to nature values

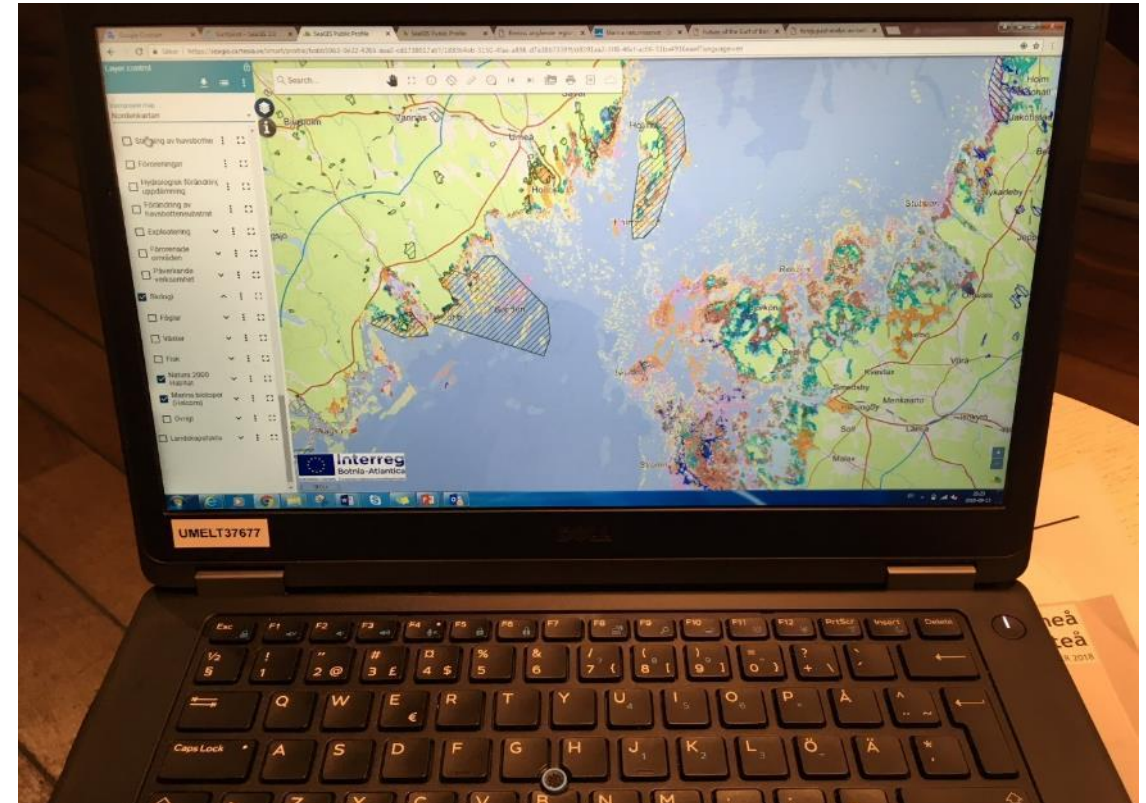
The map displays a coastal area with various land use zones and geographical features. Key elements include:

- Legend:**
 - Havsplanegräns (Blue line)
 - Områdesbeskrivningar (1:3863148 - 32395206) (- 3880147)
 - Områdesavgränsningar (Orange line)
 - Sandutvinning (Orange circle)
 - Yrkesfiske (Hatched pattern)
 - Attraktiva livsmiljöer (Pink area)
 - Sjöfart (Dark grey area)
 - Sjöfart under utredning (Dark grey area with hatched pattern)
 - Sjöfart utanför havsplan (Dark grey area)
- Geographical Features:**
 - Strömmen:** A large body of water on the right side of the map.
 - Öarna:** Several islands and peninsulas, including one labeled "Öarna" and another labeled "Strömmen".
 - Land Use Zones:**
 - G (General use):** Light green areas.
 - N (Nature conservation):** Dark green areas.
 - Gn (General use with respect to nature values):** Light blue areas.
 - Attraktiva livsmiljöer:** Pink areas.
 - Sjöfart:** Dark grey areas.
 - Sjöfart under utredning:** Dark grey areas with hatched patterns.
 - Sjöfart utanför havsplan:** Dark grey areas.

[illegible]

SeaGIS map service

- Library of maps for the sea and coastal zone
- Harmonized symbology between corresponding FI-SE data
- Open and accessible, even in mobile devices
- And much more ...



Very useful for

- ✓ Marine spatial planning
- ✓ Cross-border cooperation
- ✓ Communication
- ✓ Environmental impact assessment
- ✓ Marine nature conservation
- ✓ Marine green infrastructure
- ✓ Blue growth

What about blue growth?

Activities within the project:

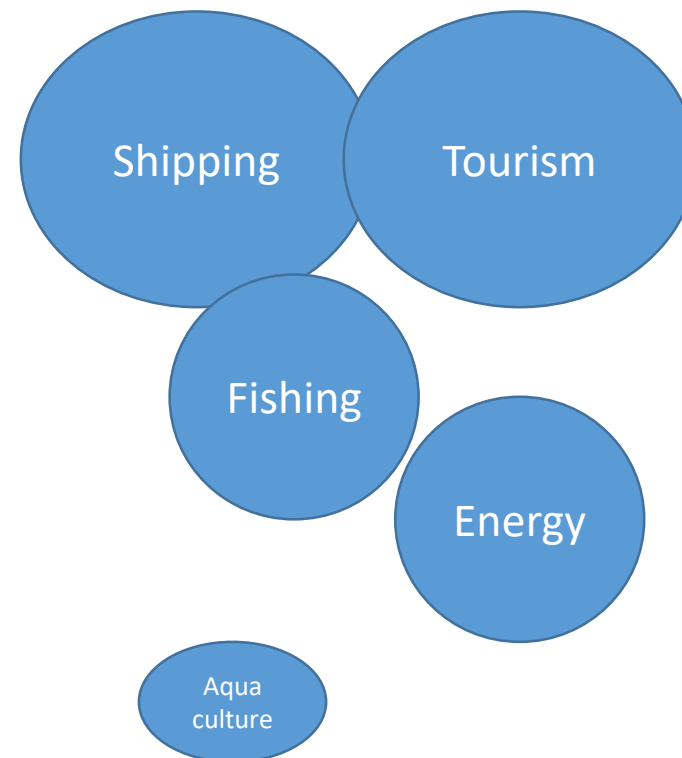
- ✓ SeaGIS 2.0 has examined existing national and regional plans and strategies
- ✓ SeaGIS 2.0 has conducted a series of recurring workshops and interviews





Themes:

1. Fishing and aquaculture
2. Shipping and infrastructure
3. Energy (mainly wind power)
4. Coastal tourism
5. Recreation and nature conservation
- (6. Island communities)



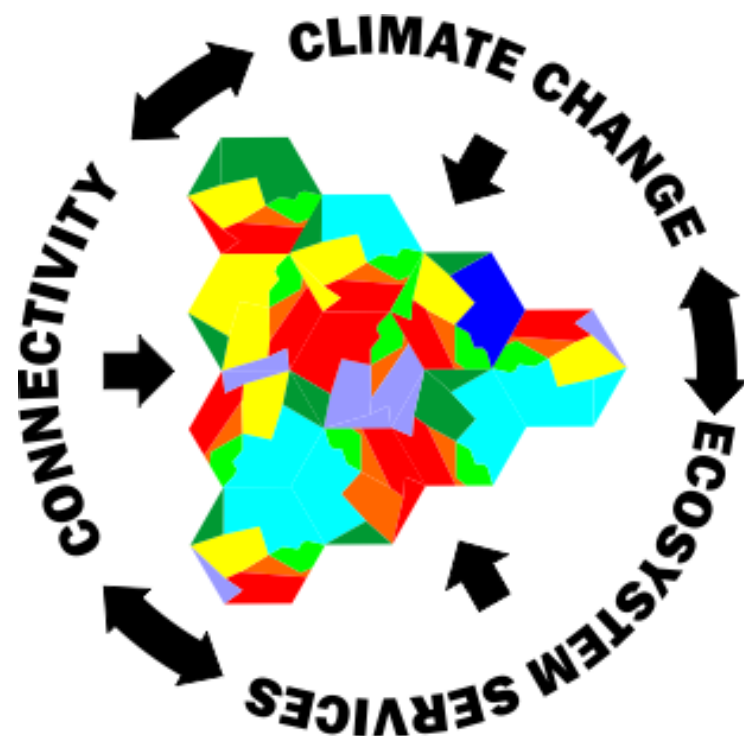


www.seagis.org



Project EConnect

Interreg
Botnia-Atlantica
Europeiska regionala utvecklingsfonden



METSÄHALLITUS
FORSTSTYRELSEN



Närings-, trafik- och
miljöcentralen



Länsstyrelsen
Västerbotten



Länsstyrelsen
Västernorrland

2018-2021

www.seagis.org

Thank you for listening!

Johnny Berglund

Project manager SeaGIS 2.0

County Administrative Board of Västerbotten